



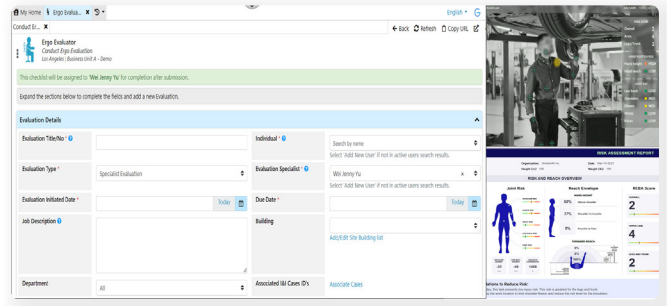
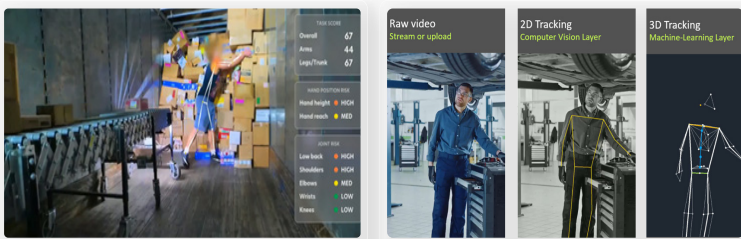
## Simplified and Automated Ergonomic Assessments for Everyone!

*Benchmark Gensuite® and 3MotionAI partnership enhances the Ergo Evaluator application to enable video-based ergonomic assessments using Computer Vision AI.*

**Musculoskeletal Disorders (MSDs) are the number one cause of workplace injuries across industries that include manufacturing, industrial, distribution, and warehousing environments, among others.** Advanced technologies like computer vision provide a tremendous opportunity to complement traditional Ergonomics programs and practices in preventing MSDs.

**Benchmark Gensuite® partners with 3motionAI** to simplify the use of AI-powered computer vision to automate ergonomics assessment and guidance in the workplace. Benchmark Gensuite Ergo Evaluator users can conduct Ergo assessments using standardized checklists and/or computer vision AI video analysis. Ergo Evaluator’s capability to track follow-up actions, which can be exported to the Action Tracking System, is helpful for a site to work on improvements.

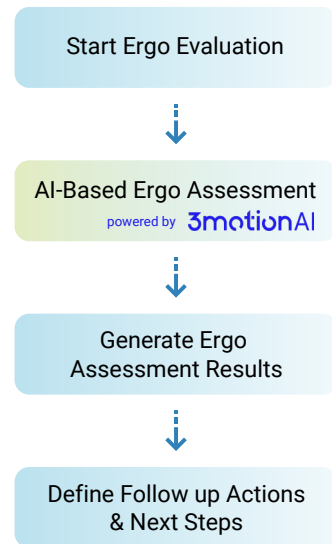
3motionAI’s 3D-NeuroNET is designed for rapid and simple integration, with API direct data access that drives human performance insight in real-time from a single phone video. The 3motionAI integration delivers performance analysis data directly into the Benchmark platform. The alliance with 3motionAI strengthens Benchmark’s subscriber engagement in both AI and prevention solutions.



The **Ergo Evaluator** is the application module on the Benchmark Gensuite instance to standardize ergo evaluation and problem-solving processes for industrial job tasks and office work. Ergo evaluation can be conducted for worker self-assessment or specialist-led analysis. Users can choose to complete an evaluation using a business/site-authored checklist. In addition, users can now record and upload a video clip and leverage AI algorithms (powered by 3motionAI) to analyze the job and automatically generate analysis results, including REBA risk scores.

### Key Benefits of Using Computer Vision AI for Ergo Evaluation:

- Ensure standardization and consistency.
- Increase efficiency and save time.
- Improve evaluation quality and accuracy.



Benchmark Gensuite® enables companies to implement robust, cross-functional digital systems for EHS, Sustainability, and ESG Reporting through a unified digital platform—locally, globally and across diverse operating profiles.

With intuitive, best-practice-based process functionality, flexible configurations, and powerful extensions, the Benchmark Gensuite® platform has helped companies worldwide manage their EHS, Sustainability; Quality; Operational Risk and Compliance; Product Stewardship, and Supply Chain Risks for over two decades; and now organically integrated with cutting-edge ESG disclosure reporting and management solutions.

Join over 3 million users that trust Benchmark Gensuite® with their software system needs and benefit from rapid deployment and adoption, immediate return on investment (ROI), service excellence, and collaborative innovation.

**Benchmark Gensuite® enables companies to implement robust, cross-functional digital systems for EHS, Sustainability, and ESG Reporting.**

- Comprehensive Software Solutions Suite
- Cloud-Based, Single Version Software
- Streamlined Collaboration Platform
- Engaging & Empowering Stakeholders

### Unified EHS, Operational Risk, Sustainability & ESG Reporting Platform

#### EHS

- Safety
- Environment
- Occupational Health

#### Sustainability

- Sustainability / Climate
- Performance Mgmt.
- Disclosure Reporting

#### ESG Reporting

- Materiality
- Disclosure Reporting

#### Operational & Risk

- Quality
- Equipment Compliance
- Security

#### Stewardship & Supplier Risk

- Product Stewardship
- Supply Chain Engagement

3motionAI is a leading AI technology company that extracts vital data from videos capturing and analyzing complex human movements. Our solution delivers valuable data insights that enhance performance, skill development, injury prevention, and overall well-being.

At the heart of 3motionAI's innovation is the 3DNeuroNet Advanced Human Analytics Engine, a state-of-the-art proprietary system. This technology seamlessly integrates computer vision (CV) with artificial intelligence (AI) and machine learning (ML) to extract millions of data points from every video. These data points are then meticulously processed through activity-specific NeuroNets, allowing us to address a wide range of unique questions regarding human function across various applications.

Access a **human analysis library** for performance across industries and use cases

Easily interact with platform solutions through everyday devices. Access data quickly, in user-friendly formats, and apply insights and recommendations immediately through our pre-built library or customized solutions.

#### Serving a diverse set of use cases including:

- Active & Healthy Aging
- Fitness & Wellness
- Workplace Risk & Safety
- Healthcare Delivery
- Sports Performance

Empower your Business with **Motion Intelligence.**



Integrated Advanced Tech & AI



Dashboards & Analytics



Genny® Virtual Assistant



AI Powered Solutions



+ a b | e a u

Download Benchmark Gensuite® Today!

4.4



Visit [www.benchmarkgensuite.com](http://www.benchmarkgensuite.com) for more information

© Benchmark Digital Partners LLC, 2023. All rights reserved.